

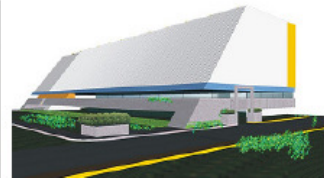
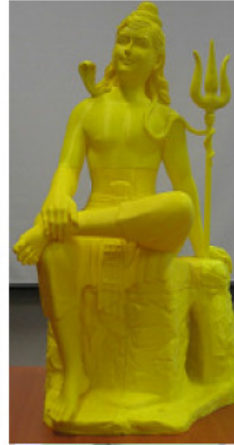


Skeleton

Skeleton Consultants Pvt. Ltd.

Integrated Project Consultants

Structural Design, PEB & Wind Engg Consultants



****SERVICES OFFERED****

INDUSTRIAL SECTOR:

MASTER PLANNING, ARCHITECTURE, INTERIORS, STRUCTURE, LANDSCAPES, MEP+FIRE SERVICES

BUILDING & STRUCTURES:

RC STRUCTURAL DESIGN & DETAILING, STEEL STRUCTURES DESIGN & DETAILING, PRE ENGINEERED BUILDINGS, PROOF CONSULTANCY, WIND ENGINEERING CONSULTANTS, RC & STEEL BRIDGE DESIGN/PROOF CHECKING, STRENGTH ASSESSMENT & REHABILITATION DISTRESSED BUILDING, WIND TUNNEL DESIGN CONSULTANTS

Contact: Directors

Er. Arun Sodhani: arun.sodhani@skeleton.in, mobile: 09752531945, (INDORE)

Er. (Dr) Abhay Gupta: abhay.gupta@skeleton.in, Phone: 09871844932, (NOIDA)

Er. Jayesh Kumar Jain: jk.jain@skeleton.in, mobile: 09329548742, (INDORE)

Delhi-NCR Office: A-75, SECOND FLOOR, SECTOR-5, NOIDA –201301, Email: skeletondelhi@skeleton.in

Indore Office: 412, Satguru Parinay, Op. C-21 Mall, Near Pakiza Retail, INDORE (MP) 452010

Tel: 0120-2425006, 0731-2551267, Email: skeletonindore@skeleton.in

Bengaluru Office: 65/1, 5th Main, Ganga Nagar, RT Nagar, BANGALORE-560032 India.

Office Incharge: Mr. Babumon PJ +91-9958003108: www.skeleton.in

Introduction

M/s Skeleton Consultants Pvt. Ltd.(SCPL) & M/s ESCOM Consultants Pvt. Ltd. (ECPL) are sister concerns, working in the area of Integrated Project & Engineering consultancy since last more than 30 years.

Er. RK Gupta, a senior civil engineer and practicing consultant started RKGupta & Asso. at Indore in early Eighties which was later converted to RKGA Consultants P. Ltd. Er. Arun Sodhani, a post-graduate civil/structural engineer joined RKGA in 1987, after serving as teaching faculty at SGSITS Indore for about Six years. SCPL was started in 1989 by Er. Arun Sodhani & Er. RK Gupta, as a subsidiary of RKGA Consultants P. Ltd. Indore, initially to provide structural consultancy services and later on in 2012 converted to a full-fledged Integrated Project Consultancy organization, having offices in Indore and Delhi. Er. Jayesh Jain & Dr. Abhay Gupta worked as teaching faculty at SGSITS Indore from 1983 to 2007. Er. Jayesh Jain joined SCPL in 2007 and Dr. Abhay Gupta shifted to Noida as Vice-President in Era group. He then moved to MNC EIGEN (UK) as Vice-President (Design) at Gurgaon office. Later, Dr. Abhay Gupta started ECPL in Jan. 2011 along with well-known architect firm DFA. In Jan. 2014, Dr. Abhay Gupta became a part of SCPL and all the business and staff of ECPL was merged with SCPL and moved in new premises in Noida (Delhi-NCR). Recently SCPL has started a project office in Bangalore & Navi Mumbai also. As on today we have offices at Indore, Noida (Delhi-NCR), Bangalore and Navi Mumbai.

Our Delhi-NCR office is situated in Sector # 5 NOIDA with an area of approximately 4000 sq. ft. The office is equipped with all the sophisticated modern facilities. SCPL Noida has 35 Desktop computers, 4 laptops, 1 Multi-function print-scan-copier, 2 Plotters, Printers etc. The company has its own library which consists of various national and international codes, handbooks and standard reference books of Civil/Structural Engineering.

Several Eminent Structural Engineers & Academicians are our Advisors. The list includes Prof. Prem Krishna (IIT Rourkee) and Dr. Supratic Gupta (IIT Delhi)

Our Vision

To be the Best and most efficient Integrated Project consultant & Engineering service provider in the area of Industries, Buildings, Structure and infrastructure field delivering exceptional value to its stakeholders consistently.

Our Mission

Our mission is acquisition and application of knowledge, integration of diverse working experience with the staff and thereby succeeds in service delivery from winning the confidence of client through proven performance

Our mission is to excel fairly in all natural Competitions, through our performance, through integrity, entrepreneurship, and the ability to grow with qualities that support the client's objectives.



We have Two major Divisions. One is for **Industrial Sector** where we provide complete integrated project consultancy right from concept planning till completion including PMC. Project done in Automobile & Ancillary Industry, Textile, Pharma, Chemical and Fertilizer, Edible Oil, Packaging industries, commercial & residential and Silos. The second one is **Building Sector** where we provide specialized Structural Engineering Consultancy Services for RCC & Steel building and other structures like: Sports Facilities, Hotels, PEB structures, Mix Development, Concrete Statue, Earthquake Engineering practice, Wind Engineering, Condition assessment & Health monitoring of Structures, Repair, Rehabilitation and Retrofitting, Proof checking, Peer Review & Value Engineering.

- ◆ Various technical and other magazines that SKELETON subscribe for update the Engineering knowledge, as listed below:
 - Steel structures & metal buildings
 - Indian Concrete Journal
 - Insdag's steel in construction
 - Indian Geotechnical Journal

- ◆ Professional Associations where SKELETON's staff are members:
 - Institution of Engineers (India)
 - Indian Geotechnical Society
 - Indian Association of Structural Engineers (IAStructE).
 - International Network of Women Engineers & Scientists (INWES)
 - Indian Geotechnical Society, Delhi Chapter (IGS)
 - Indian Society for Wind Engineering (ISWE)
 - Indian Society of Earthquake Technology (ISET)
 - Indian Society for Technical Education
 - Institution of Vastu Science (India)
 - Association of Structural Engineers, Indore
 - Indian Road Congress
 - Institute for Steel Development & Growth (INSDAG)
 - Indian Society of Remote Sensing
 - SGSITS Alumni Association
 - IIT Roorkee Alumni Association
 - Indian Society for Construction Materials & Structures



ASSOCIATES

- ESCOM CONSULTANTS PVT. LTD
A-75, Second Floor, Sector # 5, Noida (Delhi-NCR) 201301
Ph.: 0120-2425006, 2425007
Contact: Dr. Abhay Gupta - 09871844932
E-mail : abhay.gupta@skeleton.in
Website: www.skeleton.in
- GEM ENGSERV PVT. LTD.,
A-401 The Great Eastern Chambers, Plot No.28, Sector-11 ,
CBD-Belapur , Navi Mumbai – 400614
- HVAC CONSULTANTS
Degree Day Engineers
EW-58, Scheme No. 94-E
Opp. Mayur Hospital
Ring Road, Indore-452001
- MEP CONSULTANTS

PKV Consulting Engineers (P) Ltd.
815-C, DDA Flats, East of Loni Road, Delhi-110093

Prolific MEP Consultant OPC Pvt. Ltd.
3331, 3rd Floor, Angel Mega Mall Kaushambi,
Ghaziabad, U.P.-201010
- ENVIRONMENTALCONSULTANTS
Distington Engineers & Consultants Pvt. Ltd.
7/1, Usha Ganj, Main Road, Indore
- SAMANVAY VASTU CONSULTANCY
Building Biologist & Vastu Consultants
Er.Sonal Goel
E-403 Krishna Apra, Sector-61, Noida



FINANCIAL GROWTH

The Business of Firm is Continuously Growing.

The Turnover since Last Four years are as under –

- 2011-2012 : 335.13 Lacs
- 2012-2013 : 363.75 Lacs
- 2013-2014 : 445.92 Lacs
- 2014-2015 : 508.00 Lacs



INDUSTRIAL SECTOR SERVICES

We offers all or part of the following comprehensive services as per the needs of clients.

Project Analysis

- Site Analysis
- Land use studies
- Site planning
- Space & occupancy requirements.
- Budget & Scheduling
- Functional analysis.

Design Services

- Master planning
- Conceptual studies
- Working drawings.
- Construction documents.
- Civil
- Structural
- Electrical
- Heating, Ventilation, Air Conditioning & Utilities Planning.

Interior Systems

- Space utilization studies
- Interior design specifications
- Working drawings
- Furniture layout & detailing
- Electrical & HVAC Drawings

Construction Management

- Preparing tender documents.
- Evaluation of bids.
- Preparing comparative statements.
- Negotiations with the vendors/construction agencies.
- Construction scheduling.
- Material sourcing.
- Visiting sites for quality control
- Finalization of bills of working agencies

EXPERIENCE

WORKED FOR

- AUTOMOBILE AND ANCILLARY INDUSTRIES
- TEXTILE INDUSTRIES
- ENGINEERING INDUSTRIES
- PHARMA INDUSTRIES
- CHEMICAL AND FERTILIZER INDUSTRIES
- EDIBLE OIL INDUSTRIES
- PACKAGING INDUSTRIES
- COMMERCIAL & RESIDENTIAL
- WATER TREATMENT PLAN
- WATER TANKS
- SILO
- OTHER MISC. UNITS

MAJOR CLIENTS:

The firm has made permanent clients by virtue of Services. Important clients who have engaged the firm continuously over last 15 years are:

Mahindra Intertrade Ltd.

VE Commercial Vehicles Ltd.
(Formerly Known as Eicher Motors Ltd.)

Caparo Engg. India Pvt. Ltd.

Pratibha Syntex Ltd.

Khaitan Chemicals & Fert. Ltd.

Kinetic Honda Motors Ltd.

Tata Exports Ltd. Gajra Gears Ltd.

Caparo Maruti Ltd.

Bhaskar Industries Ltd.

Dewas Soya Ltd.

IPCA laboratories Ltd.

Flexituff Industries Ltd.

Kriti Industries Ltd.

K.S. Oils Ltd.

JBM Group

Sonic Biochem Extraction Ltd. (Matlani Group)

ISGEC Group of Industries.

Mahle Engine Components India Pvt. Ltd.

Jaicorp Industries Ltd.

Neel Metal Products Ltd.

Bestex MM (I) Pvt. Ltd.

Musashi Auto Parts India Pvt. Ltd.

Somany Ceramics Limited

Iceberg Foods Ltd.

Anubha Industries Pvt. Ltd.

Adani Group



GEOGRAPHICAL LOCATIONS OF WORKS.



- Pithampur - Indore M.P.
- Ratlam - M.P.
- Bhopal - M.P.
- Gwalior - M.P.
- Nimrani - M.P.
- Guna - M.P.
- Greater Noida - NCR
- Bawal - NCR
- Gurgaon - NCR
- Haridwar - Uttarnchal
- Panthenagar - Uttarnchal
- Kari - Gujrat
- Bhuj - Gujrat
- Pune - Maharashtra
- Amarwati - Maharashtra
- Hingoli - Maharashtra
- Kota - Rajasthan
- Khushkheda Rajasthan
- Jamshedpur - Jharkhand
- Singur - W. Bengal
- Kashipur - Uttarakhand
- Jalandhar - Punjab
- Silvassa - D & N Haveli
- Galle - Sri lanka
- Harare - Zimbabwe
- Ishwardeep - Bangladesh



Client: Mahle Engine Component India P. Ltd.

Project : Foundry Project
Location : Pithampur
Construction Year & Period : 2012-13
Contractor : UPCL, Indore
Construction Cost : 1186.50 Lacs

Client: Mahindra Steel Service Centre Ltd.

Project: Factory Bldg.
Location: Mandideep (M.P.)
Construction Year & Period: 2009-10
Contractor : Sandeep Nanavati, Vadodra
Construction Cost : 705 Lacs



Client : VE Commercial Vehicles Ltd.

Project : Central Store
Location: Pithampur Sector-I (M.P.)
Construction Year & Period: 2008-09
Contractor : Sita Homes Pvt. Ltd
Construction Cost : 795 Lacs



Client : Caparo Engineering (I) P.L., Pithampur

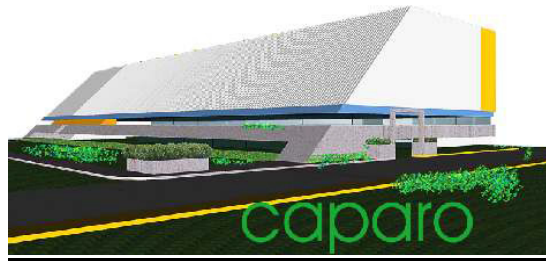
Project : Construction of Press Shop, Weld Shop, Adm Office, Ancillary Strut & Site Development
Location : Pithampur (M.P.)
Construction Year & Period: 2005
Contractor : UPCL Indore
Construction Cost : 735 Lacs





**Client : Caparo Engineering (I) P.L.,
Pithampur**

Project : Long Member Shed, Adm Office, Ancillary
Struct. &, Site Development
Location : Pithampur (M.P.)
Construction Year & Period: 2005
Contractor : Rattansingh Builders Delhi
Construction Cost : 325 Lacs



**Client: Caparo Maruti Ltd. Bawal
Project: Construction of Press Shop, Weld Shop, Adm
Office, Ancillary Strut & Site Development**

Location: Bawal (Haryana)
Construction Year & Period: July'04- Mar'05 (9
Months)

Contractor : R.B. Builders, Bhiwad
Construction Cost : 400 Lacs

**Project : Construction of Press Shop & Weld Shop
(Expansion-I)**

Construction Year & Period: Sept'05 to April 06 (8
Months)

Contractor : R.B. Builders, Bhiwad
Construction Cost : 200 Lacs

**Project : Construction of Press Shop & Weld Shop
(Expansion-II)**

Construction Year & Period : Under progress
Contractor : K.S.M. Bashir Mohd & Sons , Lucknow
Construction Cost : 1110 Lacs



Client: Flexituff International Ltd

Project : SEZ, Pithampur, Construction of Jumbo, Bag
Plant

Location : Pithampur
Construction Year & Period : 2002-03 (15 Months)
Contractor : Eco Build Indore
Construction Cost : 750 Lacs



Client: Flexituff International Ltd

Project: Construction of Jumbo, Bag Plant

Location : Kashipur (Uttarakhand)
Construction Year & Period : 2008-10
Contractor : Shri Balaji Builders, Bhiwadi
Construction Cost : 3320 Lacs



Client: **Pratibha Syntex Ltd**
 Project : Garment Unit
 Location : Sez, Pithampur
 Construction Year & Period : 2008-2009
 Contractor : Rattan Singh Builders Delhi
 Construction Cost : 715 Lacs



Client: **K.S. Oils Ltd.**
 Project : Oil Extraction Plant
 Location : Guna (M.P.)
 Construction Year & Period : 2008-09/ 2009-10
 Contractor : R.S. Builders, Delhi
 Construction Cost : 4500 Lacs



Client : **Sonic Biochem Extractions Ltd**
 Project : Construction of Bldgs For Lecithin Powder, Liquid, Lab, Adm, R&D Utility etc.
 Location : Sez, Pithampur
 Construction Year & Period : Under Progress
 Contractor : Eco Build, Indore;
 Construction Cost : 832 Lacs



Client : **Vishal Fabricators Pvt. Ltd**
 Project : Unit - II Main Plants & Plating & Brazing Plant, ETP Security, Site Development
 Location : Indore
 Construction Year & Period : 2008
 Contractor : Creative Construction (Indore) Pvt. Ltd
 Construction Cost : 300 Lacs



Client : **Khaitan Chemicals & Fertilizers Ltd**

Project : Construction of Single Super Phosphate Plant ADM Block, Ancillary Structure & Site Development works.

Location : Nimbahera (Rajasthan)

Construction Year & Period : 2005-06

Contractor : Creator Engg

Construction Cost : 434 Lacs

Name of Project : **Neel Auto Pvt. Ltd.**

Location : Hosur (T.N.)

Project : Factory Building

Construction Year : Under Progress

Contractor : ARK Infra Developers, Hyderabad

Construction Cost : Rs. 2700 Lacs



Client : **Creative Propack Ltd**

Project : Packaging Unit (Main Plant Utility & Site Development)

Location : Sez, Pithampur (M.P.)

Construction Year & Period : Under Progress

Contractor : M & A Buildcon Pvt. Ltd

Construction Cost : 200 Lacs

INDUSTRIAL PROJECT LIST

PROJECT LIST						
	Client Name	Location	Project	Constn Year & Period	Contractor	Constn Cost
ENGINEERING INDUSTRY						
1	Pithampur Auto Cluster Ltd.	Mhow (M.P.)	Phase-1 Construction of Tool Room ADM, LT& D G and technical Service area	2008-09	Newchem Engg. Indore	870 Lacs
2	Pithampur Auto Cluster Ltd.	Mhow (M.P.)	Phase-2 Industrial Training Institute.	2009		450 Lacs
3	Mahindrav Steel Service Center Ltd.	Mandideep (M.P.)	Factory Bldg.	2009-10	Sandeep Nanavati Vadodra	705 Lacs
4	ISGEC	Bawal (Haryana)	Tool Room, Adm Office Ancillary Struct.	2011	Three-S Constructions	910 Lacs
5	Shakti Pump (India) Ltd.	Pithampur (M.P.)	Manufacturing of Motor	2011-12	Creative Construction (Indore) Pvt. Ltd.	270 Lacs
6	K.M.Crown Welding	Dewas	Stick & Co electrode	2007	Ashok Const. Dewas	550 Lacs
7	Vishal Fabricators Pvt. Ltd.	Indore (M.P.)	Unit - II Main Plants & Plating & Brazing	2008	Creative Construction (Indore) Pvt.	300 Lacs
8	Mahindra UGINE Steel Co. Ltd.	Pantnagar (U.K.)	Factory Building	2010-11	Shri Balaji Builders.	730 Lacs
9	Shree Tirupati Balajee FIBC Co. Pvt. Ltd.	SEZ, Pithampur	Factory Building	2011	Eco Build.	370 Lacs
10	Mahindra Auto Steel Pvt. Ltd.	Chakan	Factory Building	Under Progress	Ratnarup Projects Pvt. Ltd., Pune	1431 Lacs
11	Tufropes Pvt. Ltd.	Masat (Gujarat)	Factory Building	Under Progress	Shree Krishnanand Infra. &	1600 Lacs
12	Filatex India Ltd.	Dahej (Gujarat)	Factory Building	Under Progress	S&T Infrabuild Pvt. Ltd., Bharuch	1600 Lacs
13	Mahindra Sona Ltd.	Pithampur (M.P.)	Factory Building	Under Progress	Creative Construction, Nasik	637 Lacs
AUTOMOBILES & ANCILLARIES INDUSTRY						
1	Mahle Engine Component Inida P. Ltd.	Pithampur (M.P.)	Cam Shaft Project	2008	UPCL Indore	1250 Lacs
2	Mahle Engine Component Inida P. Ltd.	Pithampur (M.P.)	Cam Shaft Expansiot	2011-12	UPCL Indore	950 Lacs
3	Mahle Engine Component Inida P. Ltd.	Pithampur (M.P.)	Foundry Project	2012-13	UPCL Indore	1186.50 Lacs
4	Gajra Differential Gears Ltd.	Kshipra (M.P.)	Manufacturing of Differential Gears	May'99 to Jan'02	(Makhija Const.) 2004 (Eco-Build)	420+100 Lacs
5	Bestexmm (I) Pvt. Ltd.	Khushkhera (Raj.)	Main Factory, LT DG, R.O. Shed, Office,	2008	Three-S Const	4000 Lacs
6	VE Commercial Vehicles	Pithampur Sector-I	Central Store	2008-09	Sita Homes Pvt. Ltd. Indore	795 Lacs
7	VE Commercial Vehicles	Pithampur Sector-I	Paint Shop	2011-12	Shri Balaji Builders Bhiwadi	2900 Lacs
8	VE Commercial Vehicles	Pithampur Sector-I	Reliability Lab	2010	Sita Homes Pvt. Ltd. Indore	360 Lacs
9	VE Commercial Vehicles	Pithampur Sector-II	Development & Modification	2011-12	Lalit Patni Civil Engg	975 Lacs
10	VE Commercial Vehicles	Pithampur Sector-II	Cab Weld & CMS Exp	2012-13	Sita Homes Pvt. Ltd. Indore	785 Lacs

	Client Name	Location	Project	Constn Year & Period	Contractor	Constn Cost
11	VE Commercial Vehicles	Pithampur Sector-I	Industrial Office, CSPD Building, Guest			
12	Caparo Engineers (I) Pvt. Ltd.	Pithampur (M.P.)	Construction of Press Shop, Weld Shop,	1999-2005	Sita Homes Pvt. Ltd. Indore	735 Lacs
13	Caparo Engineers (I) Pvt. Ltd.	Pithampur (M.P.)	Long Member Shed, Adm Office,	2005	Rattansingh Builders Delhi	325 Lacs
14	Caparo Maruti Ltd	Bawal (Haryana)	Construction of Press Shop, Weld Shop, Adm Office, Ancillary Strut & Site Development	July'04 to Mar'05', Sep'05 to Apr'06 (R.B. Builders), Under Progress	K.S.M. Bashir Mohd. & Sons	400+200+1110 Lacs
15	Caparo Engineers (I) Pvt. Ltd.	Greater Noida (U.P.)	Construction of Press Shop, Weld Shop, Adm Office, Ancillary Strut & Site Development	May'05 to Feb'06 (K.S.M. Bashir Mohd. & Sons), Under Progress	P.K. Builders	600+600 Lacs
16	Neel Metal Products Ltd.	Gurgaon (Haryana)	Expansion work	Under Progress	Dee Kay Buildcon Pvt. Ltd.	1580 Lacs
17	Neel Metal Products Ltd.	Manesar (Haryana)	Expansion work	Under Progress	Dee Kay Buildcon Pvt. Ltd.	810 Lacs
18	Neel Metal Products Ltd.	Bangaluru	Factory Building	Under Progress	S. Subrahmanyam Construction Co., Chennai.	820 Lacs
19	Neel Auto Pvt. Ltd.	Hosur (T.N.)	Factory Building	Under Progress	Nathan Civil Engineers & Painting Contractors, Hosur	251 Lacs
20	JBM Auto Ltd.	Pithampur Sector-3 (M.P.)	Factory Building	Under Progress	Rattan Singh Builders Pvt. Ltd.	1400 Lacs
21	Caparo Engineering (I) Pvt. Ltd.	Jamshedpur (Jharkhand)	Construction of Press Shop, Weld Shop,	2008	S.N. Singh & Bros. Jamshedpur.	1590 Lacs
22	Caparo Engineering (I) Pvt. Ltd.	Singur (W. Bengal)	Construction of Press Shop, Weld Shop,	2008	ATW Nirman Kolkata.	1010 Lacs
23	Neel Auto Pvt. Ltd., Hub	Hosur (T.N.)	Factory Building	Under Progress	ARK Infra Developers, Hyderabad	2700 Lacs

EDIBLE OIL PLANTS

1	DEWAS SOYA Ltd.	Dewas (M.P.)	SEP& Refinery	1993-94	Era Construction	450.00 Lacs
2	KHAITAN AGRO	Ratlam (M.P.)	DOC Godown, SEED Precleaner, Work	-	Creator Engg.	345.00 Lacs
3	RICO AGRO OILS Ltd.	Bundi (Raj.)	DOC Godown, SEED Precleaner, Work	1992-93	Era Construction	316.00 Lacs
4	GUJRAT AMBUJA PROTEINS Ltd	Pithampur (M.P.)	Soya Bean Extraction Plant	1992-93	B.M. Const.	340.00 Lacs
5	K.S. Oil Ltd.	Morena (M.P.)	Edible Oil Refinery & Site Development	2001-02	Sharda Construction.	230.00 Lacs
6	KRITI INDUSTRIES	Dewas (M.P.)	DOC, Prep, SEP& Site Development W	2007-08	Eco Build Indore	384 Lacs
7	K.S. Oil Ltd.	Guna (M.P.)	Oil Extraction Plant	2008-09/2009-10	R.S. Builders Delhi.	4500 Lacs
8	K.S. Oil Ltd.	Kota (Raj.)	Oil Extraction Plant	2008-09/2009-10	Shri Balaji Build. Bhiwadi	1700 sq.m
9	K.S. Oil Ltd.	Ratlam (M.P.)	Oil Extraction Plant	2008-09/2009-10	Creator Engg. Indore	1200 Lacs
10	Bergwerff Organic (I) Pvt. Ltd	SEZ, Pithampur	Soya Plant	Under Progress	Transtech Creation Indore	300 Lacs

	Client Name	Location	Project	Constn Year & Period	Contractor	Constn Cost
11	BHASKAR INDUSTRIES Ltd	Hingoli (Maharashtra)	Soyabean Plant (Expansion)	2010		235 Lacs
12	BHASKAR INDUSTRIES Ltd	Amrawati (M.P.)	Soyabean Plant (Expansion)	2009-10	R.K. Construction	1000 Lacs
13	BHASKAR SOYA	Dewas (M.P.)	Expansion	2009	Capital Construction Pvt. Ltd.	230 Lacs
14	SHARDA SOLVENT	Shivpuri (M.P.)	Expansion	2009		165 Lacs
15	M.G. Oils Ltd.	Khandwa	Factory Building			400 Lacs

TEXTILES / SPINNING UNITS

1	PRATIBHA SYNTEX Ltd.	Pithampur (M.P.)	Spinning Mill (Unit-2)	1999-2000	Skyline, Delhi	
			Knitting Dyeing & Garment	2005-2006	Skyline, Delhi	850.00 Lacs
			Open end	2006-07	Eco Build, Indore	1125.00 Lacs
			MVS & MJS	2007-08	UPCL, Indore	1850.00 Lacs
			12000 Spindles	2007-08	UPCL, Indore	
2	PRATIBHA SYNTEX Ltd.	SEZ, Pithampur (M.P.)	Garment Unit	2007-08	Rattansingh Builders, Delhi	715 Lacs
3	PRATIBHA SYNTEX Ltd.	SEZ, Pithampur (M.P.)	Garment Unit	2007-08	Rattansingh Builders, Delhi	715 Lacs
4	BHASKAR INDUSTRIES Ltd.	Mandeep (M.P.)	Indigo Dyeing Plant	2003	Eco Build, Indore	80.00 Lacs
			Spinning Mill	1995-96	Raghuvanshi Builders, Bhopal	320.00 Lacs
5	MAHIMA PURESUN	Pithampur (M.P.)	Weaving Unit	1998	Raghuvanshi Builders, Bhopal	150.00 Lacs
			Spinning Mill	2005-06	Rattansingh Builders, Delhi	460.00 Lacs
6	BURHANPUR TEXTILES Ltd.	Burhanpur (M.P.)	Factory Building	2011	Rajendra Chouhan Indore	450 Lacs
7	CIL TEXTILES Ltd.	Mhow (M.P.)	Factory Building	2010-11	Abhinav Infrabuild Pvt. Ltd.	536 Lacs
8	ANUBHA INDUSTRIES Pvt. Ltd.	Surat (Gujarat)	Factory Building	Under Progress	Shri Balaji Buildmate Pvt. Ltd.	2640 Lacs
9	ASHOK PINESPUN	Kasrawad	Factory Building	Under Progress	Eco Build	2500 Lacs

PEB / COLOUR COATED SHEET MANUFACTURING UNITS

1	A-ONE INDUSTRIES	Haridwar (Utranchal)	Construction of Factory Building for Ma	2006-07	P.K. Builders	135 Lacs
2	ERAMETAL BUILDING SYSTEMS Ltd.	Pantnagar (Utranchal)	Construction of Factory Building for Ma	May'06 to Feb'07 (10 Mo	Era Construction Pvt. Ltd.	1800 Lacs

PHARMACEUTICALS & BULK DRUG PLANTS

1	IPCA LABORATORIES Ltd.	Ratlam (M.P.)	Bulk Drug Unit Expansion	1998-2009	Various Contractors	600 Lacs
---	------------------------	---------------	--------------------------	-----------	---------------------	----------

FOOD PRODUCT INDUSTRY

1	SONIC BIOCHEMEXTRACTIONS Ltd.	SEZ, Pithampur (M.P.)	Construction of Lecithin & Various Item	2007-08	Eco Build Indore	832 Lacs
---	-------------------------------	-----------------------	---	---------	------------------	----------

	Client Name	Location	Project	Constn Year & Period	Contractor	Constn Cost
2	SONIC BIOCHEMEXTRACTIONS Ltd.	Mandideep (M.P.)	TVP& TSP Flour Plant	2009-10	Eco Build Indore	1287 Lacs
3	PRAKASH SNACKS Pvt. Ltd.	Indore (M.P.)	Chips Plant, Utility & Site Development	2011	Manoj Joshi	300 Lacs
4	SDU BEVERAGES Pvt. Ltd.	Hyderabad	Juice Factory	2011	Sri Navratna Construction, Hyderabad	700 Lacs
5	GREENFIZZ BEVERAGES Pvt. Ltd.	Kolkata		Under Progress		

PACKAGING INDUSTRY

1	JAI CORP Ltd	SEZ, Pithampur (M.P.)	Manufacturing & Synthetic Ropes	2009	M & A Buildcon Pvt. Ltd.	550 Lacs
2	CREATIVE PROPACK Ltd.	(M.P.)	Packaging Unit (Main Plant Utility & Si	2009	M & A Buildcon Pvt. Ltd.	200 Lacs
3	INDIANETS	SEZ, Pithampur (M.P.)	Manufacturing & Synthetic Ropes Kneet	June'06 to Nov'06 (Singhal Concrete), Sep'06 to Jan'07 (M &		260+229+236 Lacs
4	COMMERCIAL SYN BAGS Ltd.	SEZ, Pithampur (M.P.)	Factory Building	2012-13	Abhinav InfrabuildPvt. Ltd.	355 Lacs
5	L.F.F. Pvt. Ltd	Manglia, Indore	Factory Building	2011	UPCL, Indore	355 Lacs
6	MUPNAR FILMS Ltd.	Pithampur (M.P.)	BOPP Films Manufacturing Unit		Gannun Dunkerely Mumbai	160 Lacs
7	GILT PACK Ltd.	Pithampur (M.P.)	Tarpolin and Jumbobag Unit	1995-96	Ankur Const. Indore	240 Lacs
8	FLEXITUFF INTERNATIONAL Ltd.	SEZ, Pithampur (M.P.)	Construction of Jumbo Bag Plant	2002-03 (15 Months)	Eco Build Indore	750 Lacs
9	FLEXITUFF INTERNATIONAL Ltd.	Kashipur (Uttarakhand)	Construction of Jumbo Bag Plant	2008-10	Shri Balaji Builders, Bhiwadi	3320 Lacs
10	PRIME INDUSTRIES	Haridwar	Construction of Packing Plant, Adm. Of	Apr'06 to Jan'07 (10 Mon	VKJ Builders Dehradun	300 Lacs
11	PRIMO PICK N PACK LTD.	Jabalpur	Factory Building	Under Progress	RNG Construction Co.	300 Lacs

FERTILIZER & CHEMICAL PLANTS

1	KHAITAN CHEMICALS & FERTILIZERS Ltd.	Kanpur (U.P.)	T.G. Building.	2007		60 Lacs
2	KHAITAN CHEMICALS & FERTILIZERS Ltd.	Nimbaheda (Raj.)	Construction of Single Super Phosphate	Apr'05 to Jan'06 (09 Mon	Creator Engg. Indore	434 Lacs
3	SHRINIWAS FERTILIZERS Ltd.	Jhansi (U.P.)	Expansion of Super Phosphate Plant	2003	Creator Engg. Indore	60 Lacs
4	KHAITAN CHEMICALS & FERTILIZERS Ltd.	Nimrani	Expansion of Super Phosphate Plant	1996-2005	Era Const. & Creator Engg	450 Lacs
5	KHAITAN CHEMICALS & FERTILIZERS Ltd.	Dahej (Gujarat)	Factory Building	Under Progress	Toyota Construction Pvt. Ltd.	1600 Lacs

	Client Name	Location	Project	Constn Year & Period	Contractor	Constn Cost
CONSTRUCTION MATERIAL						
1	Somani Ceramics Limited.	New Delhi	Expansion work	2012-13		300 Lacs

MAJOR SILO DESIGNS

1	Adani Agri Logistics	Ujjain	Silo Design	2014-15	Capital Construction Pvt. Ltd.	825 Lacs
2	Adani Agri Logistics	Dewas	Silo Design	2014-15	Creative Construction, Indore	970 Lacs
3	Adani Agri Logistics	Harda	Silo Design	2014-15	Eco Build	977 Lacs
4	Adani Agri Logistics	Hoshangabad	Silo Design	2014-15	Eco Build	880 Lacs
5	Adani Agri Logistics	Satna	Silo Design	2014-15	UPCL, Indore	970 Lacs
6	Adani Agri Logistics	Vidisha	Silo Design	2014-15	UPCL, Indore	942 Lacs
7	Raghuvesh Agri Foods P. Ltd.	Indore (M.P.)	Silo Design	2014-15	UPCL, Indore	1133 Lacs
8	Raghuvesh Warehousing P. Ltd.	Bhopal	Silo Design	2014-15	RNG Construction Co.	701 Lacs
9	Sehore Agri Services P. Ltd.	Sehore	Silo Design	2014-15	Capital Construction Pvt. Ltd.	813 Lacs

COMMERCIAL AND RESIDENTIAL

1	Brilliant Technology & Construction Pvt. Ltd	Indore	Commercial Complex at Plot No. 8	2010-11		1200 Lacs
2	Brilliant Technology & Construction Pvt. Ltd	Indore	Convention Hall at Plot No. 5	2011-12		9000 Lacs
3	Brilliant Technology & Construction Pvt. Ltd	Indore	Commercial Complex at Plot No. 9	2012-13		4000 Lacs
4	BCM PARADISE	Indore	Highrise Building G+14 (4 Blocks)	2011-13		4500 Lacs
5	Siddhi Green	Mhow	Residential Group Housing Project (G+6)	2012-13		740 Lacs
6	Shubh City	Indore	Residential Group Housing Project (G+6)	2012-13		3600 Lacs
7	Coral Reef	Indore	Township Project (G+6) 5 Blocks	2012-13		2550 Lacs
8	Kanadia Apartment	Indore	Multistory Building (G+6) 2 Blocks	2012-13		
9	Yash Technology	Pune	IT Building	Under Progress	Ratnarup Projects Pvt. Ltd., Pune	3000 Lacs

OTHER

1	Vijayshree Paper Products	Indore	Factory Building	Under Progress	R.K. Building Contractor	1355 Lacs
2	Decathlon Sports India	Indore	Store	2015	Mid India Civil Erector	360 Lacs
3	Decathlon Sports India	Raipur	Store	2015	H.S. Tagore	248 Lacs

BUILDING SECTOR SERVICES:

MAJOR CLIENTS

<ul style="list-style-type: none">◆ Studio For Habitat Futures Pvt. Ltd. (Architect)◆ Miraj Developers Ltd. Nathwara_client and Rajendra Mandri Architects P. Ltd◆ DDF Consultants Pvt.Ltd,◆ Clean Max Enviro Energy Solutions Pvt. Ltd.◆ Maharaj Agrasen Hospital Charitable Trust◆ ENARCH Consultants (Pvt) Ltd.◆ JSPL,◆ Reliance ADAG,◆ Anant Raj group,◆ S-Tech group,◆ Siddharth Group◆ Khan Global Engineering Consultant Pvt.Ltd.◆ Nestle,◆ Earth Infrastructure,◆ Unitech Limited◆ DLF,◆ Uppals◆ Sunworld Residency Pvt.Ltd.◆ ASF Insignia SEZ Pvt.Ltd.◆ Lloyd Insulations,◆ Trinity	<ul style="list-style-type: none">◆ NNE Pharmaplan◆ MGI Infra Pvt.Ltd.◆ Synergy Thrislington◆ IIT, Delhi◆ Simula Infra Development◆ ADOBE System India Pvt. Ltd◆ Vogelsang India Pvt. Ltd.◆ DTTDCL◆ THDC◆ Angelique International Ltd.,◆ ENAARC Associates Pvt. Ltd◆ Sunplast Industries,◆ Urbtech's developers,◆ Splendor group,◆ Imperia group,◆ Archi Group (Architect)◆ INDCON◆ Nahar group,◆ Multicolour Steel◆ ADG SUMAVI Technical Services Pvt Ltd◆ Ginni International◆ Glair Infrastructure◆ Sare Group
--	---

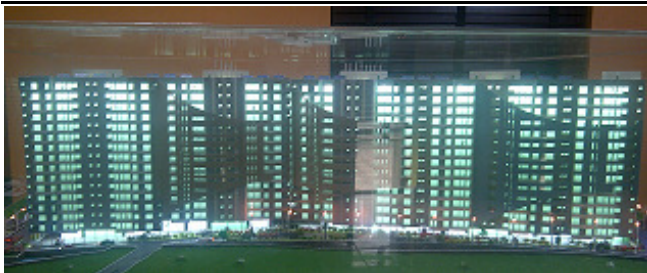
Apart from above clients we are also working for other clients for their high rise group housings, IT parks and commercial buildings ranging from 5 to 35 story buildings and Industrial plants. We are also working as consultants for Jaiprakash Associates Ltd. for Wind Engineering related review of their proposed tall buildings more than 25 floors in height.

SOME OF OUR IMPORTANT PROJECT DETAIL



SHIVA MURTI AT NATHDWARA, RAJASTHAN FOR M/S TATPADAM UPWAN

Structural Consultancy for World's 11th tallest in-situ concrete Shiva Statues. A Gigantic 351 feet high Shiv Statue is being construction at the top of a 50m high hillock in the sitting position at Nathdwara near Udaipur in Rajasthan
Insitu concrete skin (20000 sqm) over a structural steel skeleton and designed for 250+ years of life.



PARADISE AVENUE_BLOCK B FOR MGI

This project comprises of 3 towers with a total of 7 lacs sqft of built-up area spread over 15 floors. It is Steel structure building



VACCINE COMPLEX AT CHENGALPATTU, CHENNAI

An Integrated Vaccines Complex (IVC) - a project of national importance” at Chengalpattu, near Chennai having Bulk production blocks, Formulation Blocks & General Blocks. Considering that, various types of vaccines shall be manufactured; this project has been named as “INTEGRATED VACCINES COMPLEX (IVC)”
THREE buildings are constructed in RCC + Steel,



VIPL NOIDA

Integrated project

The project consists of following Main Plant for manufacturing, assembly/ disassembly, repair of spare parts, Utility and office block Medical & other facilities block, Scrap yard, Security room and other allied units.



NESTLE R&D CENTRE AT MANESAR FOR NNE PHARMAPLAN INDIA LTD.

The R&D Center comprises of parking and utility area in basement, main processing area and offices at ground Floor, laboratories at first floor and technical gallery at partial area at second floor.

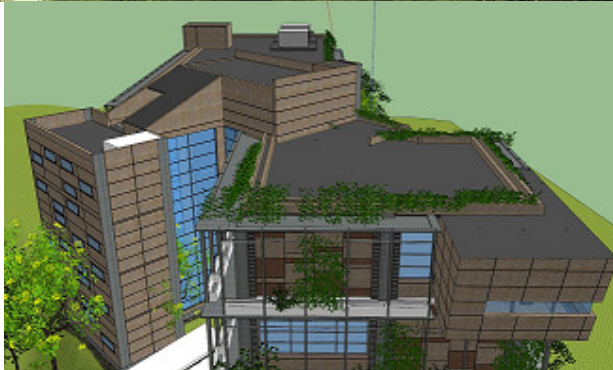
The structure is prefabricated steel technical gallery supporting grating and very equipments like AHUs, HVAC, chillers, air-compressors and hanging platforms weighing 400 kg/m2. The project being in a high earthquake prone zone (Zone IV).



NANO BIO-CENTER AT GWAL PAHARI, NEW DELHI for Studio For Habitat Futures Pvt. Ltd.

Total proposed Built-Up Area is approx 3700 SqM.

The building have 3 floors. Storey height is 4.6m for all floors. Mezzanine floors are provided for all floors at 3.45m height. The building is proposed to be a RCC Structure



HOTEL RADISSON BLUE, FARIDABAD

The project has built up area of approx.. 22000 sqm with 2 Basements, Ground + 7 floors. The hotel building has different units consisting of double height Banquet hall, coffee shop, jice bar, business center offices, restaurants, health club, Gym and Swimming pool at terrace.



**AFFORDABLE GROUP HOUSING,
SECTOR 63A GURGAON**

The project consists of 9 high rise towers of typical types, viz. (S+14) – 5 towers, (S+11) - 1 tower, (S+12A) - 2 towers, (S+12B) - 1 tower, Community Hall & Creche and a Commercial Block (G+4).



**IT BUILDING AT PUNE FOR YASH
TECHNOLOGY**

Integrated project



**SP JAGANATH DETERGENT
POWDER PLANT AT SURAJPUR**

The Building is Proposed to be a RCC frame structure with Basement + G+2 storey & one additional floor for future and misc etc

MEDICAL COLLEGE AND DISTRICT HOSPITAL AT BARMER, RAJASTHAN

Total built-up area of this project is approx. 80000 sqm. The project consists of Teaching Hospital, Medical college, Hostels, Residences, Admin building, Community block, Service block, Animal House and other allied units

MEDICAL COLLEGE & HOSPITAL AT SUNDERGARH, ODISHA

Total built-up area of this project is approx. 84500 sqm. The project consists of Hospital, Medical college, Hostels, Residences, Community block, Service block, Animal House and other allied units

HIGH SCHOOL SUSHANT LOK III GURGAON FOR STUDIO FOR HABITAT FUTURES PVT. LTD.

The project consists of seven stories having Basement, lower ground, upper ground and four storey. Permissible FAR for the entire 5 Acre site is 1, of which Phase 1 (under construction now) is covering only 0.286 (as sanctioned).

The floor plate of school Building is Unsymmetrical and irregular shape



GAIL JUBILEE TOWER, NOIDA for NIRMAN CONSULTANTS (ARCHITECT)
22 Story leed platinum rated building



DUBAI OUTLET MALL PHASE-II
Structural consultancy services for Commercial building project. Total Built-up area proposed is approx 132635.85 sq.m. The building is G+1 and Floor to Floor height is 6m except the Hyper Market area where floor height is 9m and provision for future expansion above first floor for 9m to be considered. The phase-II will accommodate the following components: Hyper Market, Anchor Stores, Retail Shops, Food court, Multiplex and Restaurants

ESCOM is the First Institutional Member of Indian Society for Wind Engineering (ISWE).(Certificate reproduced below)



ESCOM has received Certificate of achievement from Bentley



Er.(Dr.) ABHAY GUPTA BE(Civil), ME(Struct), Ph.D., FIE(I) C H A R T E R E D E N G I N E E R

Director, Skeleton Consultants Pvt. Ltd. NOIDA

Dr. Abhay Gupta has obtained his BE(Civil) in 1981 & subsequently ME(Structures) from SGSITS Indore; and Ph.D. from University of Roorkee, Roorkee (now IIT Roorkee) in the area of "Aerodynamic Interference in Tall Rectangular Buildings: Wind Tunnel Studies" in 1996. He has more than 30 years of experience in the field of Civil Engineering construction and Structural design.

Dr. Abhay Gupta is one of the Directors of Skeleton Consultants Pvt. Ltd. having offices at Delhi-NCR & Indore, wherein consultancy is provided for Integrated Project Delivery, right from Concept to commissioning in Industrial Sector. He is also founder Director of ESCOM Consultants P. Ltd. at Noida, a leading Civil, Structural and Infra-structural engineering consulting firm in Delhi-NCR, established since Jan. 2011. Skeleton & ESCOM provides consultancy in the field of mid-rise and high-rise RC buildings for residential, commercial, retail, education, sports, hospital and other sectors, Industrial steel buildings, PEB structures, Wind Engineering of structures, Retrofitting & Rehabilitation, and such other special areas.

He is also the Principal consultant for establishment of India's first International State-of-the-art **Wind Engineering Application Center** (Wind Tunnel) in private sector for Tall Buildings and structures, for Jaiprakash Associates Ltd. at JUET Guna in MP where one of the country's biggest Wind Tunnel facility for buildings/structures is being established.

In past he has worked with the multinational integrated engineering consultancy organization M/s EiGEN Technical Services P. Ltd. at Gurgaon as Vice President & Business Unit Head-Structural Design & Detailing from April-09 to Dec.-10 where he was responsible for integrated project deliveries on Indian and International projects for developers and consultants through implementation of technology in the service areas of RC & Steel buildings design from "RIBA stages C-to-F", Rebar detailing, Post tensioned design/detailing, 3D BIM models and Steel detailing as per Indian and British codes.

Prior to this he was Vice President-Engineering at Era Building Systems Ltd. from April-07 to March-09. He is well experienced in the field of Design & Production of Pre Engineered Steel Building and has executed more than 200 PEB projects in various sectors like Warehousing, Heavy Engineering Industrial sheds with cranes upto 150MT capacity, Hangars, Tall Industrial Structures and large domical roofs. He has made several authoritative presentations on PEB & Steel structures on several platforms across the country.

In the beginning of his career he has served as a teaching faculty at SGSITS Indore starting from 1984 and took VRS in 2007 when he was Professor of Structural Engineering. His areas of interests include Design of Structures in RCC and Steel, Design for Dynamic Effects, Codes of Practices in Wind and Earthquake Engineering, Bridge Engineering; and Soil-Structure Interaction. **He has also completed One Semester certificate course on "Earthquake Resistant Design of Buildings and Structures" from IIT Kanpur in 2003 under NPEEE.** He has also worked with the IIT Roorkee team under Prof. Prem Krishna for preparation of revised draft of IS 875: pt3, & its Handbook which is available on website of NICEE. Dr. Abhay Gupta was also awarded the Two-month summer research fellowship by INAE at IIT Roorkee in 2006 in the area of Interference in Tall Buildings & made an invited presentation during the 3rd International Workshop on Harmonization of Wind loading codes in Asia-Pacific region in Delhi in 2006. He was one of the invited experts for Wind Tunnel Testing & investigation for 130m, 160m & 205m tall buildings proposed/constructed at Kolkata, Noida and Mumbai respectively, done at IIT Roorkee. During this period he has worked on several positions of administrative responsibilities as given in detailed CV.

Dr. Gupta is a Fellow of Institution of Engineers (India), Indian Association of Structural Engineers and a Life Member of Indian Geotechnical Society, Indian Society of Wind Engineering, Indian Roads Congress, Indian Society of Earthquake Technology and

He has guided more than a dozen of ME thesis in the areas of Wind & Earthquake engg, Structural Engg. and Concrete Technology. He has also organized and attended several National and International conferences. **Dr. Abhay Gupta has travelled to UK, Dubai, Finland, The Netherlands, Singapore, Italy, Australia & Swaziland (SA) for professional assignments.**

Er. Vandana Verma: Deputy General Manager

ME 1991 from SGS Instt. of Tech. & Sc. Indore

BE(Civil) 1988 from SGS Instt. of Tech. & Sc. Indore

Professional Career

- 2 Yrs GM in ICT-SD Engineering Consultants Pvt.Ltd., New Delhi
- 2 Yrs Dy.Manager Design & Drafting in Era Metal Building System Limited, Noida
- 1 Yr Structural Design Engineer in M/s Meinhardt Singapore Pte Ltd., NOIDA
- 3 Yrs Structural Design Engineer in M/s Charu Engineering Consultant, New Delhi
- 2 Yrs Sr. Civil Engineer in M/s Kanwal Builders Pvt.Ltd., New Delhi
- 8 Yrs Civil Engineer in M/s ATV Projects India Limited, Mathura (U.P.)

Major Design Projects:

- IT PARK Structural design of Advant IT park tower B with flat slab construction , Greater Noida
- GROUP HOUSING of Siddhartha one Housing at Gurgaon comprising basement for car parking,
- COMMERCIAL Structural Design of Shopping mall DLF building at Gurgaon
- GROUP HOUSING - Structural Design of Stech Imperia at Greater Noida
- INDUSTRIAL – Structural design of transformer manufacturing plant for PRIME ELECTRICAL LTD., NAYUDUPETA at NELLORE comprising main production plant, Guest House, Canteen , Temple, workers housing etc.
- PRE ENGINEERED STEEL BUILDING –Design of sheds such as Heavy Lifting shed, Inspection shed for Mumbai Rail Vikas Corporation , Mumbai,
- PRE ENGINEERED STEEL BUILDING –Design of various sheds for eastern central railway such as Carriage stores, Wheel & Bogie park for GPT, Harnaut.
- PRE ENGINEERED STEEL BUILDING –Design of sheds for Jindal Saw Ltd. At Nanakapaya
- PRE ENGINEERED BUILDING –Design of sheds for Arani Power with crane capacity 75 T at Hyderabad
- PRE ENGINEERED BUILDING –Design of sheds IMP Power with crane capacity 75 T at Silwasa
- TOWNSHIP – Project Management of township in 30 acre land having various quarters such as Bachelor accommodation, Staff housing , Manager housing ,General Manager Housing ,Vice President residence, Over head water tank, Temple, roads, Sub- station ,ATV labour colony etc. for ATV Projects India Ltd. At Mathura.
- WATER RETAINING STRUCTURE - Effluent Treatment plant circular tanks as well as rectangular tanks of various capacities.
- M/s Jindal Saw Limited, Mundra, in Gujarat: Pre engineered building of size 70 M x 165 M shed with crane capacities 15 T along with Shed 30 M x 70 M with 40 T capacity cranes.
- M/s Jindal Saw Limited, Bellary in Karnataka: A Pre engineered Building of size 60 M x 150 M shed with crane capacity 15 T
- M/s Jindal Saw Limited, Nanakapaya: A Pre engineered building of size 65Mx120M shed with crane capacity 15 T and 40 T
- M/s Arani Power Limited, Hyderabad: Pre engineered building of size 40Mx80M with 80T crane capacity
- M/s Mumbai Rail Vikas Corporation, Mumbai inspection shed of size 30Mx280M with crane capacity 15T heavy lifting shed of size 30Mx160M with crane capacity of 30 / 15 T, pit wheel lathe shed of size 12.5mx30m with crane capacity 5 T
- M/s GPT, Harnaut several buildings such as bogie repair, carriage Stores, wheel & bogie park, heavy repair shed, light repair shed, Plant care, incinerator, outgoing coach etc.
- Transformer plant for M/s Prime Electric limited at Nayudupeta, SEZ, and Nellore development of 100 acre land.
- M/s ATV PROJECTS (I) LTD, execution of town ship in 30 acre of land with Staff quarter, bachelor accommodation, manager, general manager, vice president accommodation, Over head tank, road etc.

BUILDING SECTOR PROJECT LIST

A. PROJECTS FOR IIT, DELHI

- PRE ENGINEERED BUILDING AT AGARTALA FOR M/s. DWARIKA PROJECTS LIMITED-Completed
- PEB FOR M/S MES BANGALORE- Completed
- BSES HOUSING AT JANAKPURI- Completed
- KENDRIYA VIDHYALA, ANDREWSGANJ- Completed
- BUILDING OF TRIBAL HOSTAL GOVT. OF CHHATTIGARH AT DWARKA. NEW DELHI- Completed
- HOARDING DETAIL FOR IIT (UNIPOL DESIGN)- COMPLETED
- HANGAR FOR ARMY AT PATHANKOT - DESIGN CHECKING- Completed
- STRUCTURAL SAFETY AUDIT OF EXISTING OID BHAWAN AT SEC-73, NOIDA- Completed
- STRUCTURAL DESIGN CHECKING FOR SUB-REGISTRAR OFFICE, KAPASHERA, GEETA COLONY, BASAIDASPUR-Completed
- STRUCTURAL DESIGN CHECKING FOR SUB-REGISTRAR OFFICE ALIPUR & NANGLOI- completed
- STRUCTURAL DESIGN CHECKING FOR SUB-REGISTRAR OFFICE LIBASPUR AND MANJHRI – CLIENT : DTTCL-Running
- STRUCTURAL DESIGN CHECKING FOR SUB-REGISTRAR OFFICE at Bhalswa - Running
- STRUCTURAL DESIGN CHECKING FOR SUNWORLD ARISTA HOUSING PROJECT AT SECTOR-168 NOIDA (Tower 2,3,4)- completed
- STRUCTURAL DESIGN/PROOF CHECKING OF ETP&STP for SIMA LAB
- STRUCTURAL AUDITING WORK OF NEW BUILDING OF M/S ADOBE AT SECT. 132, NOIDA

B. PROJECTS FOR OTHER GOVT.CLIENTS

- PEB HANGAR (60.00X60.00) for MES (NAVY) AT ARAKONAM, VIZAG. - Completed
- PRE ENGINEERED BUILDING OF HANGAR AT RAMNAD, for MES (NAVY) VIZAG- Completed

C. PROJECTS FOR OTHER CLIENTS

RUNNING PROJECTS

➤ COMMERCIAL

- DUBAI OUTLET MALL AT DUBAI _ FOR DDF CONSULTANTS PVT.LTD.
- MEDICAL COLLEGE AND DISTRICT HOSPITAL AT BARMER , RAJASTHAN
- MEDICAL COLLEGE & HOSPITAL AT SUNDERGARH, ODISHA
- SP JAGANATH DETERGENT POWDER PLANT, PLOT NO.A03, A04, SURAJPUR

➤ GROUP HOUSING/VILLAS

- RESIDENTIAL TOWERS FOR JINDAL STEEL & POWER, ANGUL (ORISSA) (STEEL FRAME BUILDING)
- GROUP HOUSING AT GREATER NOIDA FOR SPACE DESIGN GROUP
- VILLA DEVELOPMENT ON PLOT AT SECTOR-11, SOHNA HARYANA FOR THDC (SOHNA CITY LLP)

➤ IT PARK/ SPECIAL

- RESIDENTIAL TOWER AT JAMMU IN STEEL
- SHIVA MURTI AT NATHDWARA, RAJASTHAN for M/S TATPADAM UPWAN

➤ PROOF CHECKING/PEER REVIEW

- SUNWORLD ARISTA – SUN WORLD ARISTA PROJECT AT PLOT NO. GH-01C, SEC-168, NOIDA (Tower 5,6,7,8&10)
- THDC KASAULI
- INSPIRE AT GH-03 SECTOR 119 NOIDA FOR ELDECO
- PROOF CONSULTANCY FOR GROUP HOUSING AT GREATER NOIDA

COMPLETED PROJECTS

➤ **COMMERCIAL**

- ANANTRAJ GROUP-COMM TOWER AT SEC-44, GURGAON
- COMM BLDG AT PLOT 111-112 SEC-136, NOIDA FOR ANANTRAJ GROUP
- PARKING LOT FOR INDOGULF HOSPITAL NOIDA
- PLOT NO. N-11, N.D.S.E, PART-I, NEW DELHI FOR M/S UPPALS
- MONNET GROUP CANTEEN BLOCK, AT NAHARPALI RAIGARH FOR M/S DFA ARCHITECTS
- COMMERCIAL BUILDING AT PLOT No.- 59 , SEC- 136, NOIDA FOR M/S GGG REALITY PVT. LTD
- SAPPHIRE COURT AT SEC-KP-V, GREATER NOIDA FOR M/S EARTH INFRASTRUCTURE
- GHI SOHO TOWER AT SECTOR 67, GURGAON FOR M/S DFA ARCHITECT
- DATA CENTRE FOR ADAG RELIANCE , NAVI MUMBAI
- GREENFIELD COMPACT HYPER MARKET AT HYDERABAD A.P – BHARTI WALMART LIMITED
- COMMERTIAL TOWER AT 32-33, SECTOR 142, NOIDA FOR M/S DFA ARCHITECTS
- BUSINESS CITY AT LUDHIANA FOR M/S ARCHI GROUP
- AGENCIE GODOWN PLOT NO. C-10/7,C-10/8 SITUATED IN SAROJINI NAGAR LUCKNOW FOR M/S PUNJAB KESARI
- RADISSON BLU HOTEL, SECTOR-20B, FARIDABAD FOR M/S ADG SUMAVI TECHNICAL SERVICES PVT.LTD.
- SPS APOLLO HOSPITAL- LUDHIANA FOR M/S ADG SUMAVI
- ANANT RAJ 93-94 SEC-136 NOIDA FOR KGD
- DLF LUDHIANA FOR DLF
- ABC HOTEL AT LUDHIANA FOR M/S ARCHI GROUP

➤ **GROUP HOUSING/VILLAS**

- WORKER'S HOUSING FOR RHYTHM TEXTILES & APPARELS PARK NEAR LUDHIANA
- NCR GREEN FOR SIDDHARTHA GROUP
- S-TECH IMPERIA HOUSING, SEC-KP-V,G.NOIDA
- PARSADA G-TYPE G+3 **LGFS HOUSES** OF JSPL RAIGARH
- GROUP HOUSING AT NEEMRANA, ALWAR, RAJASTHAN FOR ANANTRAJ GROUP - ARCHITECT M/S DFA ARCHITECT
- SEC-63A -400 YDS & 500 YDS VILLAS FOR DFA (ANANTRAJ GROUP)
- PROPOSED MASTER PLAN DEVELOPMENT FOR SARE GROUP AT KOLATHUR, CHENNAI.
- PROPOSED MASTER PLAN DEVELOPMENT (TWIN & QUAD VILLAS) FOR SARE GROUP AT KOLATHUR, CHENNAI
- PROPOSED MASTER PLAN DEVELOPMENT (TWIN & QUAD VILLAS) FOR SARE GROUP AT THIRUPORUR
- SIDHARTHA BUILDHOME – NCR GREEN HOUSING AT SEC-95, GURGAON - ARCHITECT M/S DFA ARCHITECT
- OPULENT INFRA DEVELOPERS – XAVIERS HOUSING, SEC-168, NOIDA - ARCHITECT M/S DFA ARCHITECT
- AIMS GOLF TOWN, SECTOR 4, G. NOIDA FOR DFA (AIMS GOLF TOWN DEVELOPERS PVT. LTD.)

➤ **RESIDENTIAL/APPARTMENTS**

- More than 70 Builder Apartments B+G+4, in Delhi-NCR

➤ **IT PARK**

- ADVANT NAVIS BUSINESS PARK-PH II SECT-142, NOIDA
- RETROFITTING & REHABILITATION WORK FOR DELHI CARGO TERMINAL FOR VIPUL MODERN BUILDCON PVT. LTD.

➤ **INDUSTRIAL/PEB**

- DENIM – BOILER, DENIM-COMPRESSOR ROOM, SPG LT PANEL ROOM, OSWAL SPINNING PLANT FOR DFA (OSWAL)
- MIDI EXTRUSION
- TRINITY BANGLORE FOR MULTICOLOR STEELS
- ONS INFOTECH AT SURAJPUR
- CRWCL-MUNISH

- PRELIMINARY DESIGN AND WEIGHT ESTIMATION OF PEB BUILDINGS FOR TPCA, NIAGARA INFRA, GLAIR INFRA ETC.
- NAHAR INDUSTRIES BOILER LALRU
- COMPOST PAD AT IMPHAL FOR GLAIR INFRASTRUCTURE
- HEAVY FABRICATION SHOP AT ISGEC YAMUNA NAGAR FOR GLAIR INFRASTRUCTURE
- CASH & CARRY STORE IN ALLAHABAD FOR BHARTI WALL MART
- RAIN PROTECTION SHED BORL FOR OCTAMEC ENGINEERING
- NESTLE R&D CENTER MANESAR FOR NNE PHARMA
- JSPL RAIGARH - B. RUBM Pond Yard, D. STP
- INDCON PROJECTS & EQUIPMENT LTD. - INDUSTRIAL SHED AT DAHEJ, DISTT. BHARUCH (GUJARAT)
- OSWAL PLANT FOR DENIM/ SPG/RMG ETC. FOR DFA (OSWAL)
- CENTRAL LAUNDRY PARK FOR QDS
- HBL INTEGRATED VACCINE COMPLEX AT CHENGALPATTU, CHENNAI FOR NNE PHARMAPLAN INDIA
- PASTEUR INSTITUTE OF INDIA COONOR FOR NNE PHARMAPLAN INDIA
- GREENFIELD FOODS FACILITY AT BHUBANESWAR FOR M/S ANMOL BISCUITS
- PROPOSED COLD STORE & EXTRACTION PLANT FOR M/S AROMATRIX FLORA PVT.LTD.
- NPI-BCGVL CHENNAI FOR NNE PHARMAPLAN INDIA
- NEW BSL-3 ANIMAL VACCINE PLANT AT JAKARTA, INDONESIA FOR M/S PT SHS INTERNATIONAL

➤ **PROOF CHECKING/PEER REVIEW**

- PEB BUILDING FOR GLAIR INFRA
- PEB SHED AT KANPUR & IMPHAL FOR GLAIR INFRA
- TPDDL STAFF COLONY AT SHALIMAR BAGH FOR M/S TATA POWER DELHI DISTRIBUTION LIMITED
- ANSAL GOLF CITY GH3 AT LUCKNOW
- ASF INSIGNIA SEZ - GRAND CANYON-B3, FOR ASF INFRA
- ASF INSIGNIA -HOUSING COMPLEX INSIGNIA GURGAON
- IBIS HOEL IN GOA FOR ADG SUMAVI TECHNICAL SERVICE PVT LTD
- IBIS HOTEL IN HYDERABAD FOR ADG SUMAVI TECHNICAL SERVICE PVT LTD
- CBC TOWER AT GURGAON FOR GLAIR INFRASTRUCTURES LIMITED
- DLF NEW TOWN HEIGHTS GROUP HOUSING AT KAKANAD COCHIN
- DLF STUDIO APARTMENT AT VIBUTHIKHAND, LUCKNOW FOR DLF

➤ **SPECIAL**

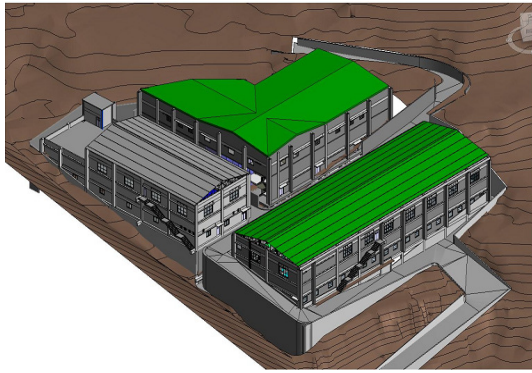
- HANGAR FOUNDATION FOR MAGO AT AGRA
- OKAYA-IT PARK
- VIPUL MODERN FOB
- VIPUL MODERN MISC.
- S-TECH IT BLOCK, G.NOIDA FOR DFA
- TOWER T1,T2&T3 AT HARMONY FOR UNITECH LIMITED

ESCOM TEAM PAST EXPERIENCE IN HEAVY INDUSTRIAL PEB PROJECTS

LIST OF STEEL STRUCTURE PROJECTS

S No.	Client	Location	Approx. Area (sqm)	Special feature
1	BHEL-Fabrication Shop	Ranipet	2000	100/20 MT EOT
2	Weg Industries P Ltd.	Hosur	20800	80/60/40/20/10 MT EOT, 2 MT Jib Crane
3	Arani Power	Hyderabad	7500	80MT cranes and multi gable structure
4	IMP Power	Silvassa	5600	75/20MT cranes in a multigable structure
5	L & T - MHI Boilers Shop A & B	Hazira	9000	60/40/20 MT EOT, 2 MT WMC
6	L & T - Gasifier Shops	Hazira	10600	50 MT EOT
7	Telco Construction Equipment	Kharagpur	11100	40 MT EOT, 10 MT SGEOT
8	BHEL-MP Shop	Ranipet	1850	40 MT EOT, 3 MT SGEOT
9	L & T - Assembly & Integration Shop	Talegaon	3850	25 MT EOT, 2 MT WMC
10	L & T - MHI Boilers Shop C, D, E & F	Hazira	36000	5/10/20 MT EOT, 5/15 MT SGEOT
11	Era Buildsys Ltd.	Nagpur	46200	10/15 MT EOT
12	L & T - Accommodation Shop	Hazira	2000	15 MT EOT
13	BMRC-Peenya Depot	Bangalore	32650	3.5/5/15 MT
14	MRVC - Lifting & Inspection Shed	Mumbai	14500	Curved rafter 3 workshops with cranes 15 MT EOT
15	L & T - Electric Shop	Hazira	2000	10 MT EOT
16	Surya Roshni Pvt. Ltd	Bhuj	13000	3/5/10 MT EOT
17	L & T - Warehouse	Hazira	2000	10 MT EOT
18	Thermax Ltd	Baroda	1750	7.5 MT EOT
19	Hindustan Aeronautics Ltd	Bangalore	4000	5 MT EOT
20	Jindal Saw Limited	Mundra	36000	Large industrial units with 22.5m span jack beams and crane beams - 5nos. 30T
21	Jindal Saw Limited	Nanakpaya	15000	5-30 MT EOT, Sheds
22	Jindal Saw Limited	Bellary	31500	5-30 MT EOT, cranes , jack beams.
23	Nectar Life Sciences	Chandigarh	7000	47m high, 11 floor industrial structure. 1st time in PEB.
24	Mumbai Rail Vikas Corporation	Mumbai		Heavy Lifting shed, Inspection shed
25	BAJAJ ECOTECH		46468	large sugar mill complex at three locations
26	GPT INFRA/ Harnaut	Harnaut	37175	Complex of 17 buildings. RITES & IIT approved design. Crane Capacities 5/10/15/20/50 MT EOT

PHOTOGRAPHS/IMAGES/VIEWS OF SOME OF OUR PROJECTS



NPI-PIIC COONOR FOR NNE PHARMAPLAN INDIA



NPI-INTEGRATED VACCINES COMPLEX (IVC) AT CHENNAI



NESTLE R&D CENTRE, MANESAR



EARTH INFRASTRUCTURE – SAPPHIRE COURT AT SEC-KP-V, GREATER NOIDA



OPULENT INFRA DEVELOPERS – XAVIERS HOUSING, SEC-168, NOIDA



ANSAL API HAWANA HEIGHTS AT SONIPAT



SARE KOLATHUR, CHENNAI (VILLA)



SARE OMR, THIRUPORUR, CHENNAI (QUAD VILLA)



SIDHARTHA - NCR GREEN HOUSING AT SEC-95, GGN



ADVANT NAVIS BUSINESS PARK-PH II SECT-142, NOIDA



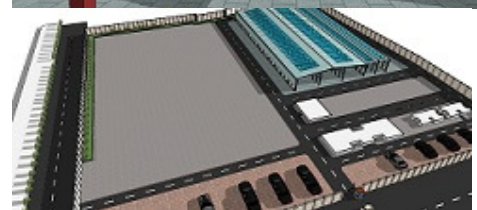
ANANTRAJ GROUP-HOUSING AT NEEMRANA, ALWAR



COMM BLDG AT PLOT 111-112 SEC-136, NOIDA



PLANT FOR INJECTION MOULDING AT G. NOIDA (ONS INFOTECH)



INDCON PROJECTS & EQUIPMENT LTD. - INDUSTRIAL SHED AT DAHEJ, DISTT. BHARUCH (GUJARAT)



NCR ONE HOUSING AT SEC-95 GURGAON



FACTORY BUILDING AT SEC-59 NOIDA (KENT RO)



MULBERRY COUNTY, SECTOR 70, FARIDABAD



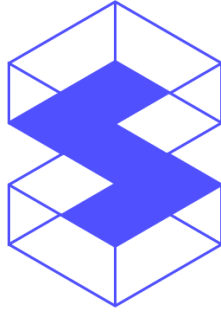
RELIANCE IDC V AT DAKC, NAVI MUMBAI



RADDISON BLU HOTEL, FARIDABAD



AIMS GOLF TOWN AT SEC-4, G.NOIDA. (GH)



Regd office:

412 Satguru Parinay, Plot No.5, P.U.3
Commercial Scheme No.54, Opp. C-21
Mall, Near Pakiza Retail, Indore (M.P.)
452010
Ph.- 0731-2551267
E-mail- skeletonindore@skeleton.in

NCR Delhi:

A-75, Second Floor
Sector#5, Noida-201301
Ph.- 0120-2425006, 2425007
E-mail-skeletondelhi@skeleton.in

THANK YOU